

Typical Data for Models 2516-2A and 2516-2B Bandpass Filters

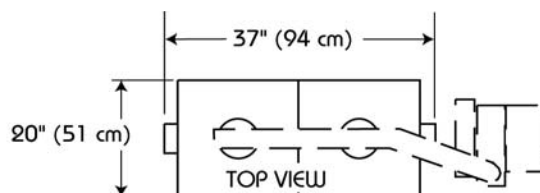
Performance Specifications

Type:	Resonant Cavity	
Size:	16"	
No. of Cavities:	2	
Typical VSUR	at ± 100 kHz:	1.10:1
	at ± 150 kHz:	1.15:1
	at ± 200 kHz:	1.20:1
Typical Insertion Loss:	≈ -0.12 dB	
Typical Frequency Response (deviation from center frequency)	at ± 100 kHz:	-0.01 dB
	at ± 150 kHz:	-0.05 dB
	at ± 200 kHz:	-0.10 dB
Typical Group Delay (deviation from center frequency)	at ± 100 kHz:	15 nsec
	at ± 150 kHz:	30 nsec
	at ± 200 kHz:	100 nsec
Typical Bandwidth:	± 200 kHz	

Inputs, Outputs, and Weight:

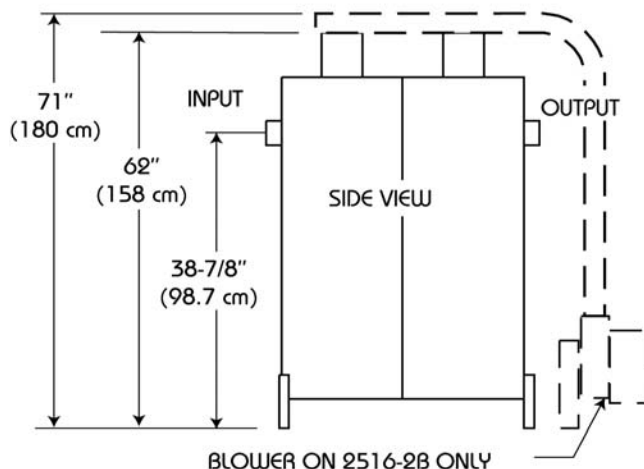
	Model 2516-2A	Model 2516-2B
Cooling:	Convection	Forced Air
Inputs:	1-5/8" EIA	3-1/8" EIA
Outputs:	1-5/8" EIA	3-1/8" EIA
Maximum Input Power:	10 kW	30 kW
Shipping Weight:	250 lb (114 kg)	300 lb (136 kg)

Dimensions:



NOTE

Blowers for the forced-air-cooled units occupy a footprint of approximately 24" x 24" (51 x 51 cm). They must be located near the output end of the filter, but are not included in the length shown.



Document No. ds-2516-2 (150316)

A Division of Howell Laboratories, Inc., P. O. Box 389, Bridgton, Maine 04009 USA

(207) 647-3327

1-888-SHIVELY

Fax: (207)647-8273

An Employee-Owned Company

www.shively.com

sales@shively.com

Certified to ISO-9001