

## Typical Data for Models 2524-2A and 2524-2B Bandpass Filters

### Performance Specifications

Type:	Resonant Cavity	
Size:	24"	
No. of Cavities:	2	
Typical VSWR	at $\pm 100$ kHz:	1.10:1
	at $\pm 150$ kHz:	1.12:1
	at $\pm 200$ kHz:	1.18:1
Typical Insertion Loss:	$\approx -0.15$ dB	
Typical Frequency Response (deviation from center frequency)	at $\pm 100$ kHz:	-0.01 dB
	at $\pm 150$ kHz:	-0.05 dB
	at $\pm 200$ kHz:	-0.10 dB
Typical Group Delay (deviation from center frequency)	at $\pm 100$ kHz:	15 nsec
	at $\pm 150$ kHz:	30 nsec
	at $\pm 200$ kHz:	80 nsec
Typical Bandwidth:	$\pm 200$ kHz	

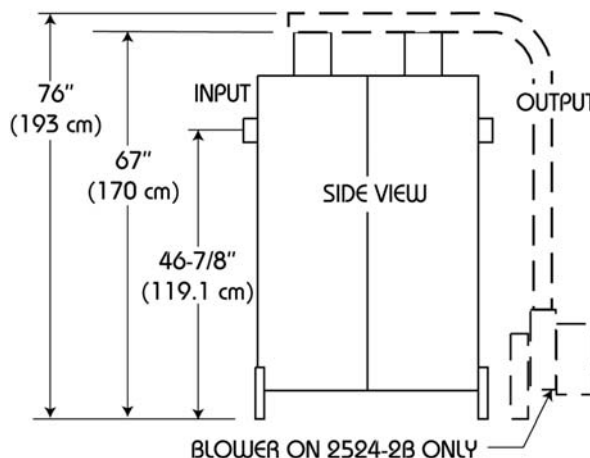
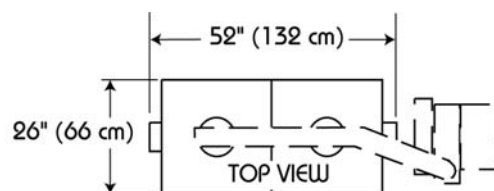
### Inputs, Outputs, and Weight:

	Model 2524-2A	Model 2524-2B
Maximum Input Power:	30 kW	50 kW
Cooling:	Convection	Forced Air
Inputs:	3-1/8" EIA	4-1/16"
Outputs:	3-1/8" EIA	4-1/16"
Shipping Weight:	300 lb (136 kg)	350 lb (159 kg)

### Dimensions:

#### NOTE

Blowers for the forced-air-cooled units occupy a footprint of approximately 24" x 24" (51 x 51 cm). They must be located near the output end of the filter, but are not included in the length shown.



Document No. ds-2524-2 (150316)

A Division of Howell Laboratories, Inc., P. O. Box 389, Bridgton, Maine 04009 USA

(207) 647-3327

1-888-SHIVELY

Fax: (207)647-8273

An Employee-Owned Company

www.shively.com

sales@shively.com

Certified to ISO-9001