

Typical Data for Models 2524-3A and 2524-3B Bandpass Filters

Performance Specifications

Type:	Resonant Cavity	
Size:	24"	
No. of Cavities:	3	
Typical VSUR	at F_0 :	1.05:1
	at ± 200 kHz:	1.10:1
Typical Insertion Loss:	≈ -0.20 dB	
Typical Frequency Response (deviation from center frequency)	at ± 100 kHz:	-0.04 dB
	at ± 150 kHz:	-0.08 dB
	at ± 200 kHz:	-0.10 dB
Typical Group Delay (deviation from center frequency)	at ± 100 kHz:	20 nsec
	at ± 150 kHz:	40 nsec
	at ± 200 kHz:	100 nsec
Typical Bandwidth:	± 200 kHz	



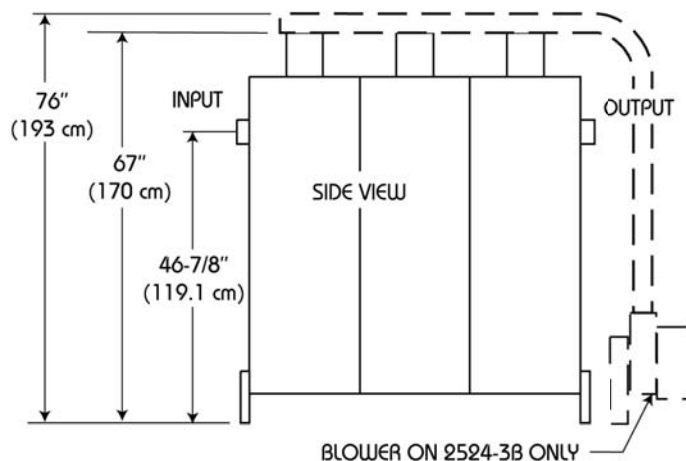
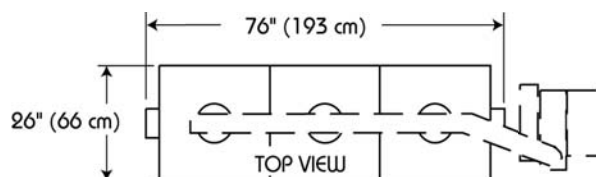
Inputs, Outputs, and Weight:

	Model 2524-3A	Model 2524-3B
Maximum Input Power:	30 kW	50 kW
Cooling:	Convection	Forced Air
Inputs:	3-1/8" ϵ IA	4-1/16"
Outputs:	3-1/8" ϵ IA	4-1/16"
Shipping Weight:	500 lb (227 kg)	550 lb (250 kg)

Dimensions:

Blowers for the forced-air-cooled units occupy a footprint of approximately 24" x 24" (51 x 51 cm). They must be located near the output end of the filter, but are not included in the length shown.

NOTE



Document No. ds-2524-3 (150316)