

## Typical Data for Models 2524-4A and 2524-4B Bandpass Filters

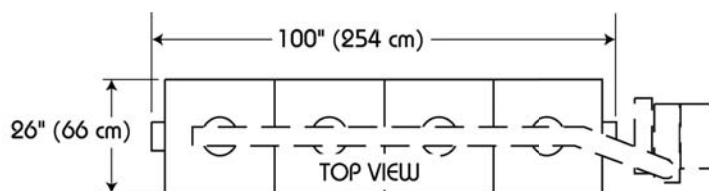
### Performance specifications

Type:	Resonant Cavity	
Size:	24"	
No. of Cavities:	4	
Typical VSWR	at $\pm 100$ kHz:	1.06:1
	at $\pm 150$ kHz:	1.04:1
	at $\pm 200$ kHz:	1.10:1
Typical Insertion Loss:	$\approx -0.25$ dB	
Typical Frequency Response (deviation from center frequency)	at $\pm 100$ kHz:	-0.01 dB
	at $\pm 150$ kHz:	-0.02 dB
	at $\pm 200$ kHz:	-0.05 dB
Typical Group Delay (deviation from center frequency)	at $\pm 100$ kHz:	25 nsec
	at $\pm 150$ kHz:	50 nsec
	at $\pm 200$ kHz:	150 nsec
Typical Bandwidth:	$\pm 200$ kHz	

### Inputs, outputs, and weight:

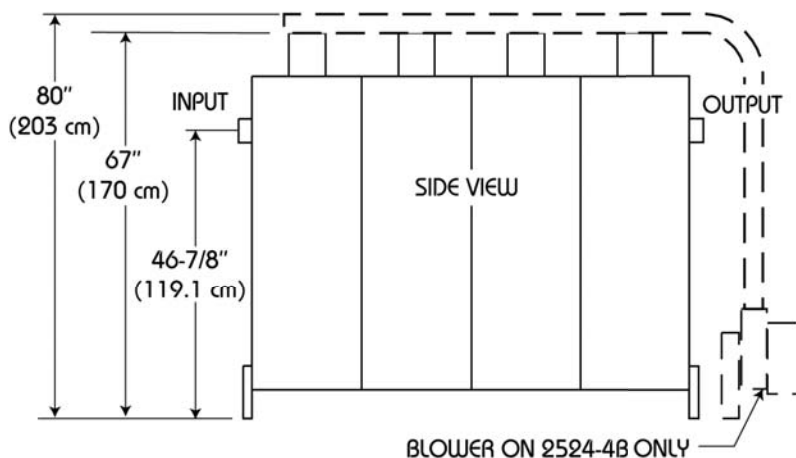
	Model 2524-4A	Model 2524-4B
Maximum Input Power:	30 kW	50 kW
Cooling:	Convection	Forced Air
Inputs:	3-1/8" EIA	4-1/16"
Outputs:	3-1/8" EIA	4-1/16"
Shipping Weight:	650 lb (295 kg)	700 lb (318 kg)

### Dimensions:



#### NOTE

Blowers for the forced-air-cooled units occupy a footprint of approximately 24" x 24" (51 x 51 cm). They must be located near the output end of the filter, but are not included in the length shown.



Document No. ds-2524-4 (150317)

A Division of Howell Laboratories, Inc., P. O. Box 389, Bridgton, Maine 04009 USA  
 (207) 647-3327 1-888-SHIVELY Fax: (207)647-8273  
 An Employee-Owned Company

www.shively.com  
 sales@shively.com  
 Certified to ISO-9001