

Data for Models 2530-2A-16 and 2530-2B-16 Two-Station Branched Combiners

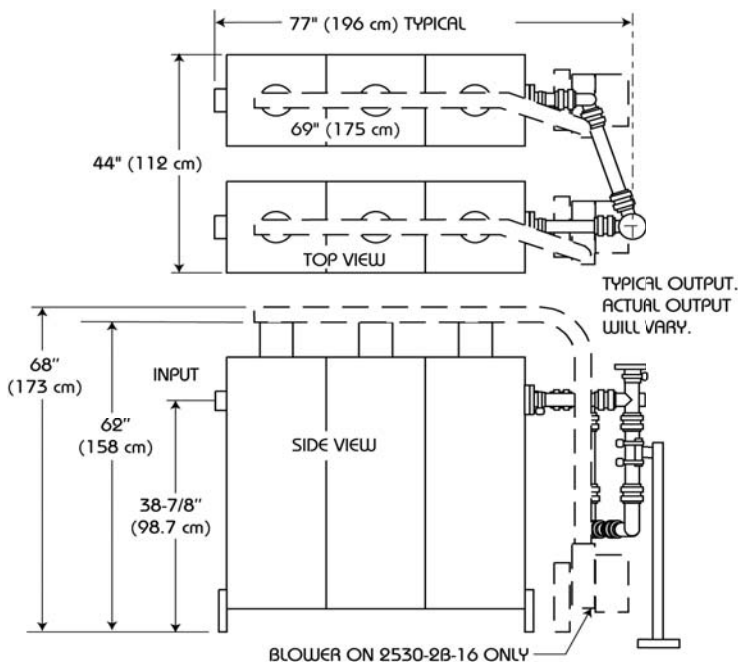
Performance specifications

| | | |
|---|--------------------|----------|
| Type: | Resonant Cavity | |
| Size: | 16" | |
| No. of Cavities per Station: | 3 | |
| Typical VSWR | at ± 100 kHz: | 1.04:1 |
| | at ± 150 kHz: | 1.06:1 |
| | at ± 200 kHz: | 1.10:1 |
| Typical Insertion Loss: | -0.30 dB | |
| Typical Frequency Response (deviation from center frequency) | at ± 100 kHz: | -0.04 dB |
| | at ± 150 kHz: | -0.08 dB |
| | at ± 200 kHz: | -0.10 dB |
| Typical Group Delay (deviation from center frequency) | at ± 100 kHz: | 25 nsec |
| | at ± 150 kHz: | 50 nsec |
| | at ± 200 kHz: | 200 nsec |
| Typical Bandwidth: | ± 200 kHz | |
| Spur Rejection, 800 kHz or greater: | Greater than 80 dB | |

Inputs, outputs, and weight:

| | Model 2530-2A-16 | Model 2530-2B-16 |
|----------------------|------------------|------------------|
| Maximum Input Power: | 10 kW | 20 kW |
| Cooling: | Convection | Forced Air |
| Inputs: | 1-5/8" EIA | 3-1/8" EIA |
| Outputs: | 3-1/8" EIA | 6-1/8" EIA |
| Shipping Weight: | 690 lb (314 kg) | 790 lb (359 kg) |

Dimensions:



Document No. ds-2530-2-16 (150317)