

Data for Models 2530-2A-24 and 2530-2B-24 Two-Station Branched Combiners

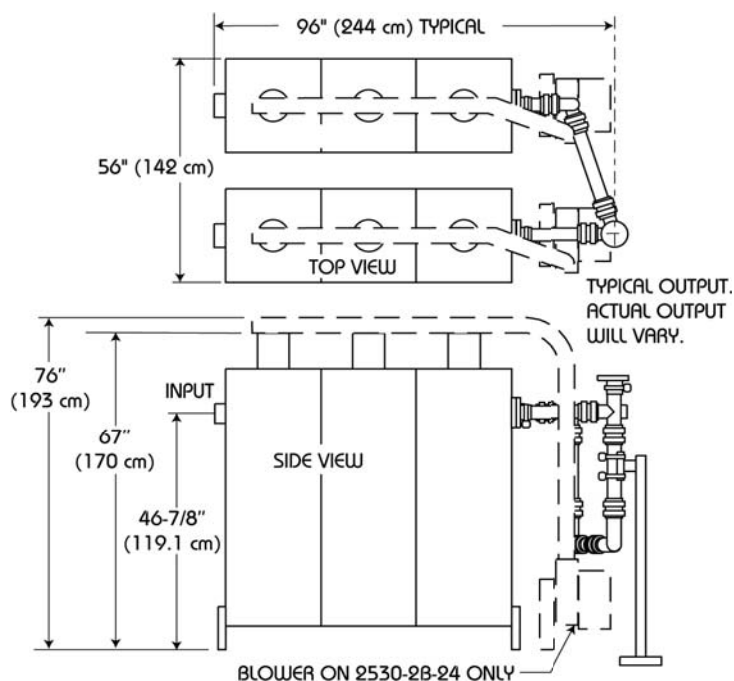
Performance specifications

Type:	Resonant Cavity	
Size:	24"	
No. of Cavities per Station:	3	
Typical VSWR	at ± 100 kHz:	1.04:1
	at ± 150 kHz:	1.06:1
	at ± 200 kHz:	1.10:1
Typical Insertion Loss:	-0.25 dB	
Typical Frequency Response (deviation from center frequency)	at ± 100 kHz:	-0.04 dB
	at ± 150 kHz:	-0.08 dB
	at ± 200 kHz:	-0.10 dB
Typical Group Delay (deviation from center frequency)	at ± 100 kHz:	25 nsec
	at ± 150 kHz:	50 nsec
	at ± 200 kHz:	200 nsec
Typical Bandwidth:	± 200 kHz	
Spur Rejection, 800 kHz or greater:	Greater than 80 dB	

Inputs, outputs, and weight:

	Model 2530-2A-24	Model 2530-2B-24
Maximum Input Power:	30 kW	50 kW
Cooling:	Convection	Forced Air
Inputs:	3-1/8" EIA	4-1/16"
Outputs:	3-1/8" EIA	6-1/8" EIA
Shipping Weight:	1060 lb (482 kg)	1160 lb (527 kg)

Dimensions:



Document No. ds-2530-2-24 (150317)

A Division of Howell Laboratories, Inc., P. O. Box 389, Bridgton, Maine 04009 USA

(207) 647-3327

1-888-SHIVELY

Fax: (207)647-8273

An Employee-Owned Company

www.shively.com

sales@shively.com

Certified to ISO-9001