

## Versa2une (SLV) FM Antenna

### Features:

- Field-tunable with or without test equipment.
- 2.5 kW per element, up to 5 kW total system power.
- Circular polarization.
- Packed unassembled in a small flat box for cost-effective shipping; requires assembly.

### Specifications:

Frequency range:	Field Tunable 87.5-108 MHz
VSWR:	< 1.1:1 if tuned with transmitter metering for minimum reflected power . < 1.2:1 if tuned with mechanical dimensions and tuning chart
Azimuth circular polarity:	Horizontal component $\pm 1.5$ dB on pole
Polarization:	Circular
Maximum input power:	5 kW total (2.5 kW per element).
Bay-to-bay spacing:	3.0 m
Input connector on feed-line cable	7/16 DIN male for single element, 7/8" EIA female on power divider for multiple element arrays.
Standard mounting:	Designed to attach to a customer-supplied 38 mm - 90 mm OD pipe.
Power dividers:	As required. Feed cables will be FSJ-50A or equivalent with DIN terminations.



### Performance specifications, stock configurations:

No. of Bays	Elevation Gain		Peak Gain		Power Rating (kW)
	Power	dB	Power	dB	
SLV-1 (1 element)	0.45	-3.421	0.65	-1.19	2.5
SLV-2 (2 elements)	0.997	-0.014	1.40	1.46	5
SLV-4 (4 elements)	2.16	3.343	3.00	4.77	5
SLV-6 (6 elements)	3.36	5.266	4.64	6.67	5
SLV-8 (8 elements)	4.58	6.61	6.31	8.00	5

### NOTES

1. Half-wave spacing and higher-power arrays are available as special configurations. Contact the factory.

### Document No. ds-SLV (170323)

A Division of Howell Laboratories, Inc., P. O. Box 389, Bridgton, Maine 04009 USA  
 (207) 647-3327 1-888-SHIVELY Fax: (207)647-8273  
 An Employee-Owned Company

www.shively.com  
 sales@shively.com  
 Certified to ISO-9001

## Dimensions, stock configurations:

	Tower space required
SLV-1 (1 element)	0.9 m (2 ft 11 in)
SLV-2 (2 elements)	3.9 m (12 ft 10 in)
SLV-4 (4 elements)	9.9 m (32 ft 6 in)
SLV-6 (6 elements)	16 m (52 ft 6 in)
SLV-8 (8 elements)	22.1 m (72 ft 6 in)

## Weight and windload, no radomes:

Weight without ice		Windload without ice	
		$EPA_N$	$EPA_T$
SLV-1 (1 element)	6.8 kg (15 lb)	0.2 m <sup>2</sup> (1.7 ft <sup>2</sup> )	0.1 m <sup>2</sup> (1.2 ft <sup>2</sup> )
SLV-2 (2 elements)	15.9 kg (35 lb)	0.3 m <sup>2</sup> (3.3 ft <sup>2</sup> )	0.2 m <sup>2</sup> (2.4 ft <sup>2</sup> )
SLV-4 (4 elements)	34.0 kg (75 lb)	0.6 m <sup>2</sup> (6.6 ft <sup>2</sup> )	0.4 m <sup>2</sup> (4.8 ft <sup>2</sup> )
SLV-6 (6 elements)	47.7 kg (105 lb)	0.9 m <sup>2</sup> (9.9 ft <sup>2</sup> )	0.6 m <sup>2</sup> (7.2 ft <sup>2</sup> )
SLV-8 (8 elements)	68 kg (150 lb)	1.2 m <sup>2</sup> (13.2 ft <sup>2</sup> )	0.8 m <sup>2</sup> (9.6 ft <sup>2</sup> )

Weight with 13 mm (1/2 in) ice		Windload with 13 mm (1/2 in) ice	
		$EPA_N$	$EPA_T$
SLV-1 (1 element)	14.1 kg (31 lb)	0.3 m <sup>2</sup> (2.7 ft <sup>2</sup> )	0.2 m <sup>2</sup> (2 ft <sup>2</sup> )
SLV-2 (2 elements)	29.9 kg (66 lb)	0.5 m <sup>2</sup> (5.4 ft <sup>2</sup> )	0.4 m <sup>2</sup> (4.1 ft <sup>2</sup> )
SLV-4 (4 elements)	59.9 kg (132 lb)	1.0 m <sup>2</sup> (10.8 ft <sup>2</sup> )	0.8 m <sup>2</sup> (8.2 ft <sup>2</sup> )
SLV-6 (6 elements)	89.7 kg (198 lb)	1.5 m <sup>2</sup> (16.2 ft <sup>2</sup> )	1.2 m <sup>2</sup> (12.3 ft <sup>2</sup> )
SLV-8 (8 elements)	119.8 kg (264 lb)	2.0 m <sup>2</sup> (21.5 ft <sup>2</sup> )	1.6 m <sup>2</sup> (16.4 ft <sup>2</sup> )

Weight with 51 mm (2 in) ice		Windload with 51 mm (2 in) ice	
		$EPA_N$	$EPA_T$
SLV-1 (1 element)	60.8 kg (134 lb)	0.5 m <sup>2</sup> (4.9 ft <sup>2</sup> )	0.4 m <sup>2</sup> (4 ft <sup>2</sup> )
SLV-2 (2 elements)	124.3 kg (274 lb)	0.9 m <sup>2</sup> (9.7 ft <sup>2</sup> )	0.7 m <sup>2</sup> (7.9 ft <sup>2</sup> )
SLV-4 (4 elements)	248.6 kg (548 lb)	1.8 m <sup>2</sup> (19.4 ft <sup>2</sup> )	1.5 m <sup>2</sup> (15.8 ft <sup>2</sup> )
SLV-6 (6 elements)	372.9 kg (822 lb)	2.7 m <sup>2</sup> (29.1 ft <sup>2</sup> )	2.1 m <sup>2</sup> (23.7 ft <sup>2</sup> )
SLV-8 (8 elements)	497.2 kg (1096 lb)	3.6 m <sup>2</sup> (38.8 ft <sup>2</sup> )	3.0 m <sup>2</sup> (31.6 ft <sup>2</sup> )

## Weight and windload with radomes:

Weight without ice		Windload without ice	
		$EPA_N$	$EPA_T$
SLV-1 (1 element)	17.7 kg (39 lb)	0.9 m <sup>2</sup> (9.7 ft <sup>2</sup> )	0.7 m <sup>2</sup> (7.4 ft <sup>2</sup> )
SLV-2 (2 elements)	37.7 kg (83 lb)	1.8 m <sup>2</sup> (19.3 ft <sup>2</sup> )	1.4 m <sup>2</sup> (14.8 ft <sup>2</sup> )
SLV-4 (4 elements)	77.6 kg (171 lb)	3.6 m <sup>2</sup> (38.6 ft <sup>2</sup> )	2.7 m <sup>2</sup> (29.6 ft <sup>2</sup> )
SLV-6 (6 elements)	113.1 kg (249 lb)	5.4 m <sup>2</sup> (57.9 ft <sup>2</sup> )	4.2 m <sup>2</sup> (44.4 ft <sup>2</sup> )
SLV-8 (8 elements)	155.2 kg (342 lb)	7.2 m <sup>2</sup> (77.2 ft <sup>2</sup> )	5.4 m <sup>2</sup> (59.2 ft <sup>2</sup> )

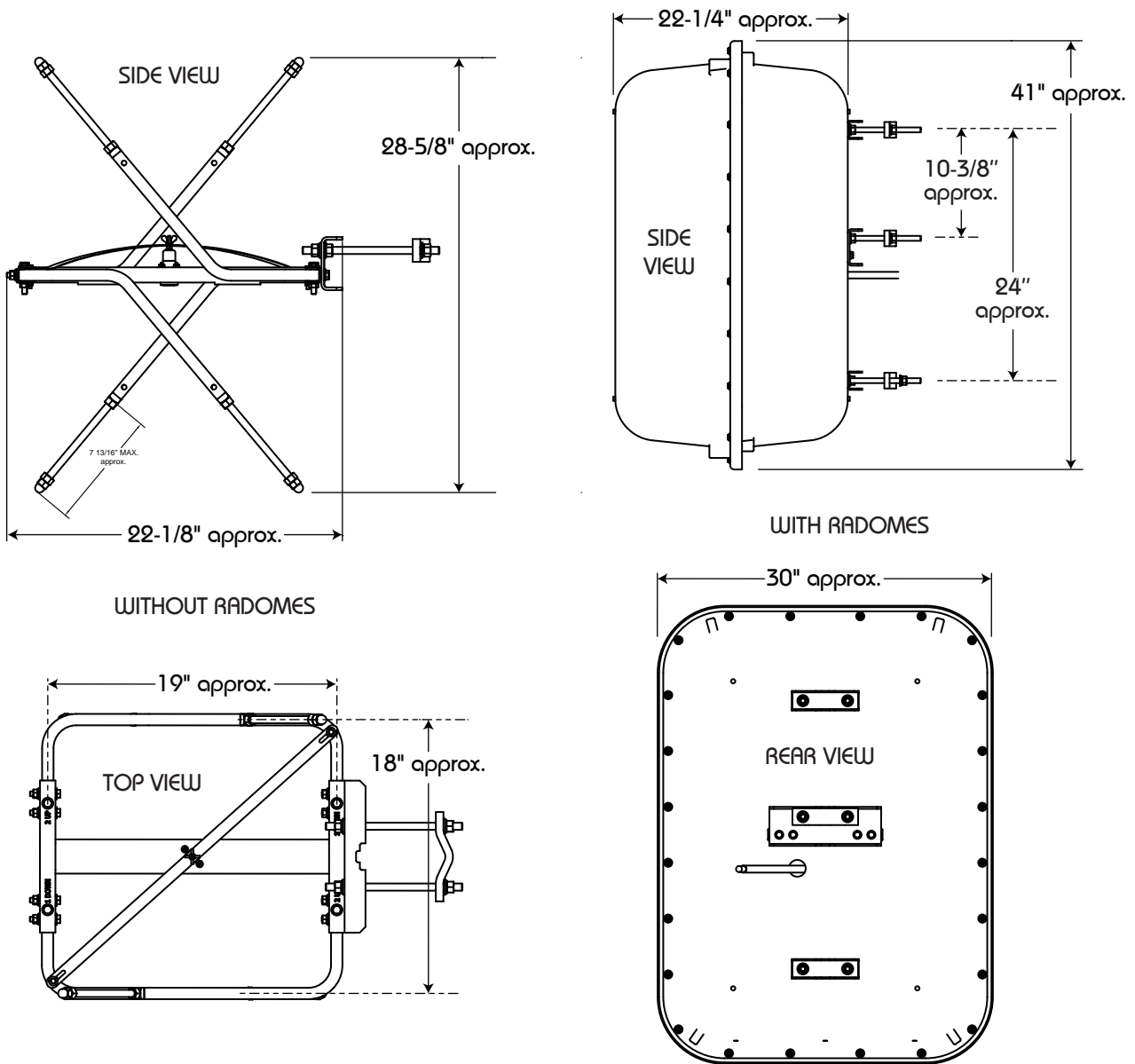
Weight with 13 mm (1/2 in) ice		Windload with 13 mm (1/2 in) ice	
		$EPA_N$	$EPA_T$
SLV-1 (1 element)	114 kg (251.3 lb)	0.9 m <sup>2</sup> (10.0 ft <sup>2</sup> )	0.7 m <sup>2</sup> (7.8 ft <sup>2</sup> )
SLV-2 (2 elements)	234 kg (515.7 lb)	1.9 m <sup>2</sup> (20.0 ft <sup>2</sup> )	1.4 m <sup>2</sup> (15.5 ft <sup>2</sup> )
SLV-4 (4 elements)	468 kg (1031.5 lb)	3.7 m <sup>2</sup> (40.0 ft <sup>2</sup> )	2.9 m <sup>2</sup> (31.0 ft <sup>2</sup> )
SLV-6 (6 elements)	702 kg (1547 lb)	5.7 m <sup>2</sup> (60 ft <sup>2</sup> )	4.2 m <sup>2</sup> (46.5 ft <sup>2</sup> )
SLV-8 (8 elements)	936 kg (2063 lb)	7.4 m <sup>2</sup> (80 ft <sup>2</sup> )	5.8 m <sup>2</sup> (62 ft <sup>2</sup> )

## Weight and windload with radomes (continued):

Weight with 51 mm (2 in) ice		Windload with 51 mm (2 in) ice	
		$EPA_N$	$EPA_T$
SLV-1 (1 element)	353 kg (778 lb)	1.0 m <sup>2</sup> (10.6 ft <sup>2</sup> )	0.8 m <sup>2</sup> (8.4 ft <sup>2</sup> )
SLV-2 (2 elements)	711 kg (1567 lb)	2.0 m <sup>2</sup> (21.3 ft <sup>2</sup> )	1.6 m <sup>2</sup> (16.8 ft <sup>2</sup> )
SLV-4 (4 elements)	1422 kg (3134 lb)	4.0 m <sup>2</sup> (42.6 ft <sup>2</sup> )	3.1 m <sup>2</sup> (33.6 ft <sup>2</sup> )
SLV-6 (6 elements)	2133 kg (4701 lb)	6 m <sup>2</sup> (63.9 ft <sup>2</sup> )	4.8 m <sup>2</sup> (50.4 ft <sup>2</sup> )
SLV-8 (8 elements)	2844 kg (6268 lb)	8 m <sup>2</sup> (85.2 ft <sup>2</sup> )	6.2 m <sup>2</sup> (67.2 ft <sup>2</sup> )

### NOTES

- Weight and windload values include mount. For multiple-bay arrays, these include cables and power divider.
- Ice values calculated per 222/G. Values other than specified can be derived by interpolation.
- Six- and eight-bay array weights and windloads will be higher than the above, depending on power dividers and feed systems used.



Dimensions