

## Model 6277 FM antenna bay assembly

1. Check the parts. You should have the following:

Parts List		
Item	Description	Qty.
1	End seal (part of main boom assy)	1
2	Arm, dipole, high-band with feedstrap clip	2
3	Boom assembly, main	1
4	Bolt, hex head M8 x 1.25 50mm SS	8
5	Nut, hex M8 x 1.25 SS	8
6	Washer, lock M8 SS	8
7	Arm, dipole, high-band	2
8	Bolt, hex head 1/4-20 x 1/2" SS	3
9	Washer, flat 1/4" SS	1
10	Washer, lock 1/4" SS	7
11	Feedstrap, 6277 antenna	2
12	Nut, hex 1/4-20 SS	6
13	Nut, hex M16 x 2.00 SS	8
14	Washer, flat 5/8" heavy galvanized	8
15	Washer, lock 5/8" galvanized	4
16	Rod, threaded M16 x 2.00 300mm SS	4
17	Clamp, mount support	2

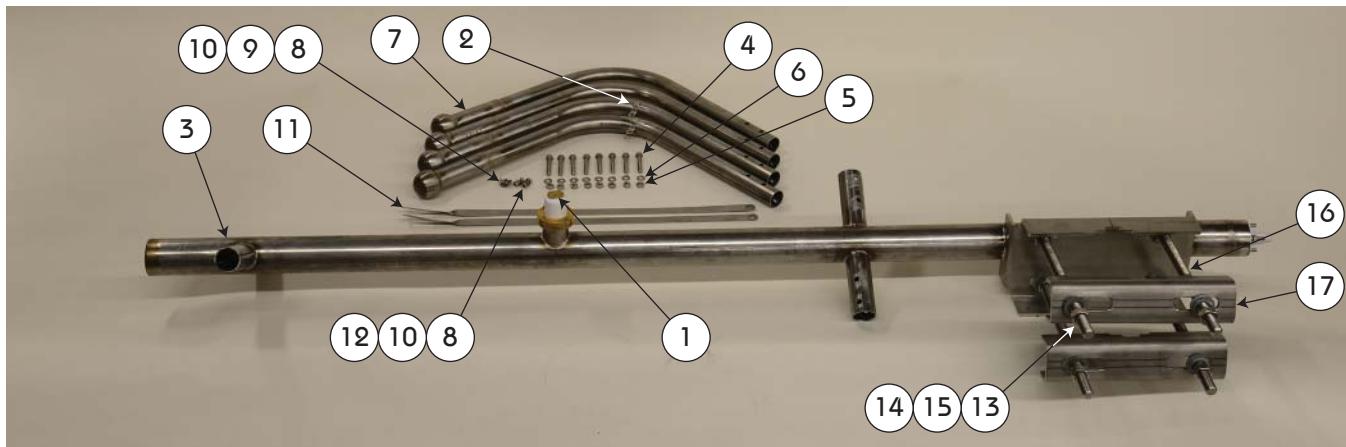


Figure 1. Parts

**Document No. ts-6277\_bay\_assembly (140626)**

A Division of Howell Laboratories, Inc., P. O. Box 389, Bridgton, Maine 04009 USA  
 (207) 647-3327 1-888-SHIVELY  
 An Employee-Owned Company

Fax: (207)647-8273

www.shively.com  
 sales@shively.com  
 Certified to ISO-9001

## 2. Assemble the antenna bay:

### NOTE

On each antenna bay, the endseal (1) points upward. Be sure to install the arms with feedstrap clips (2) on the endseal side of the main boom assembly (3).

- a. Insert arms (2) into the main boom assembly (3) so that they extend on the endseal side. Using bolts (4), nuts (5), and lock washers (6), attach the arms to the weldment.
- b. Likewise, attach arms (7) to the boom assembly.

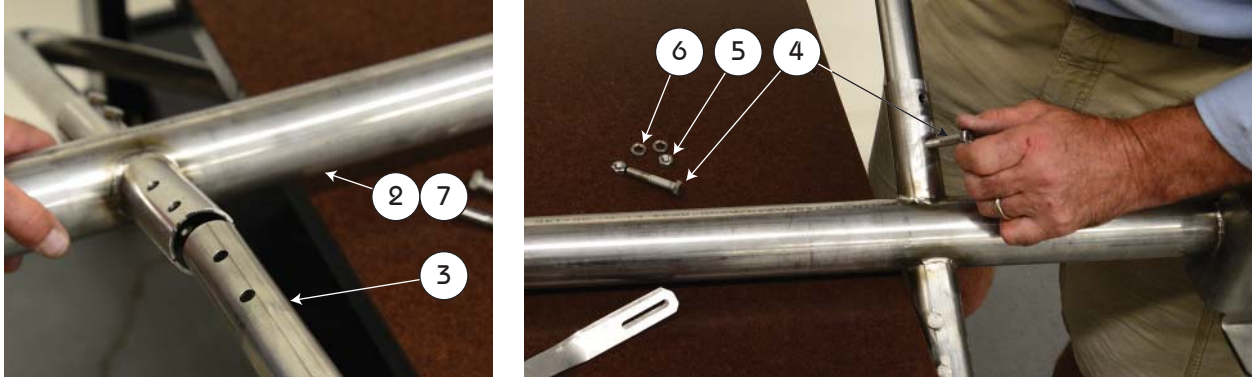


Figure 2. Attach arms to boom

- c. Using a bolt (8) with a flat washer (9) and a lock washer (10), attach the feedstraps (11) loosely to the end seal (1).

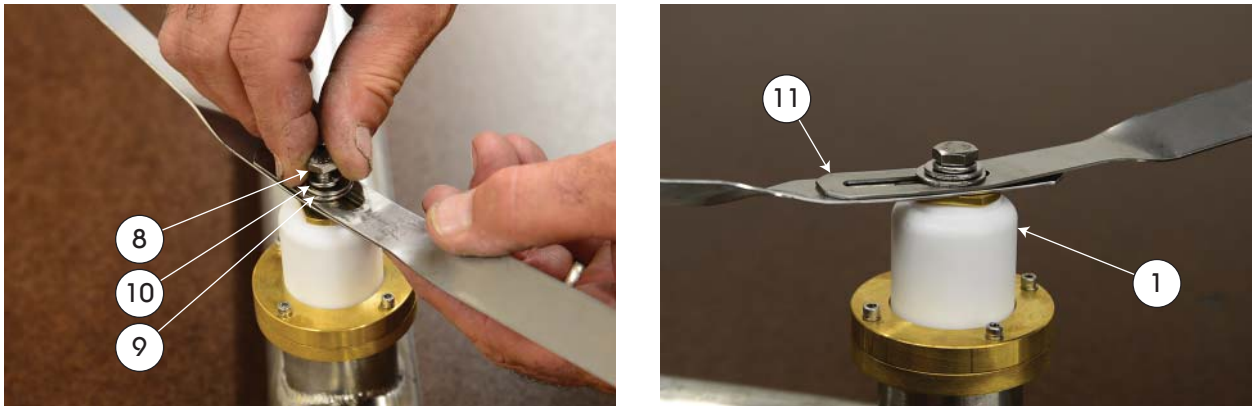


Figure 3. Attach feedstraps to endseal

- c. Using bolts (8), nuts (12), and lock washers (10), attach the ends of the feedstraps to antenna arms (2). Tighten the bolt at the endseal.

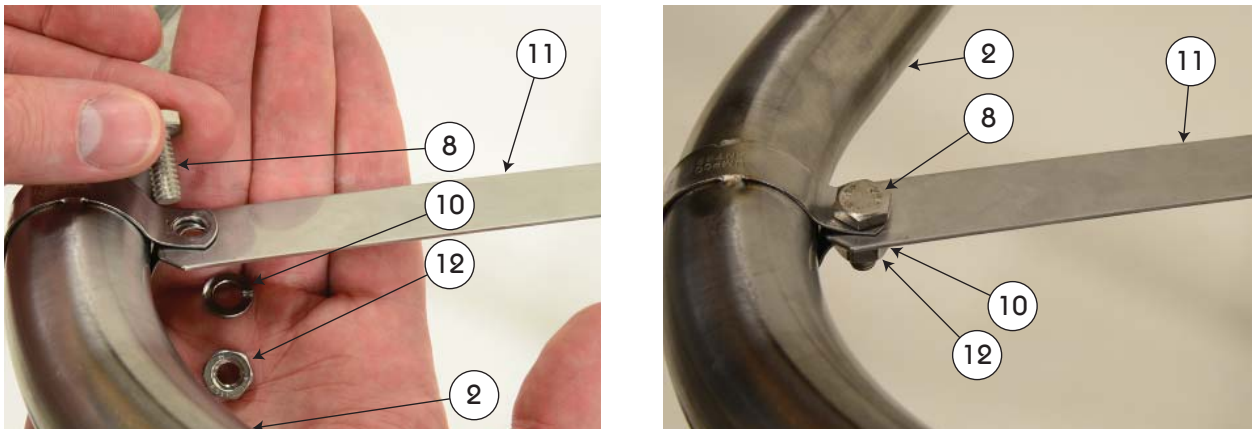


Figure 4. Attach feedstraps to upper arms

- d. Using double nuts (13) with flat washers (14) and lock washers (15), attach the threaded rods (16) securely to the main boom assembly (3). Tighten the nuts fully.
- e. Using nuts (13), flat washers (14), and lock washers (15), attach the mount support clamps (17) loosely to the threaded rods (16).

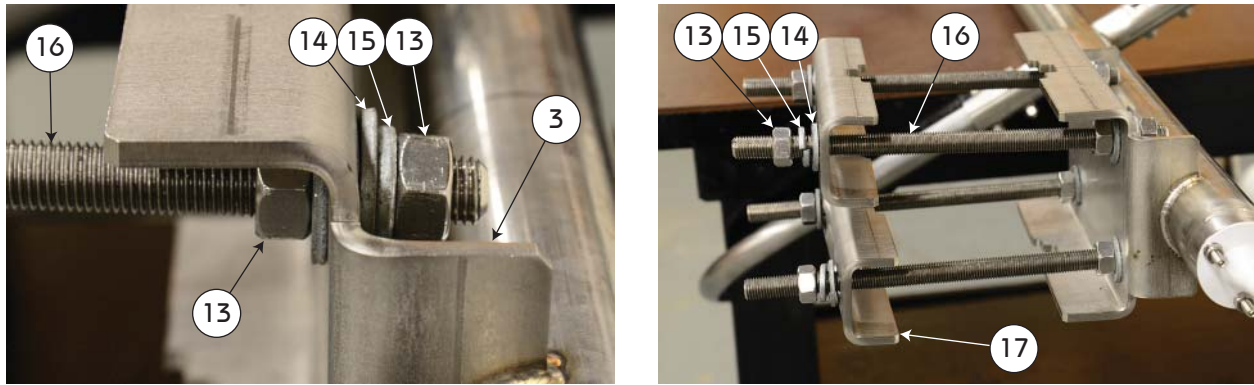


Figure 5. Attach threaded rods (16) securely to boom, then attach mounts (17) loosely to threaded rods